

## VetiX S300

Professional Veterinary  
DR Imaging System

Empowering Diagnosis.  
Enhancing Care.



LinkedIn Facebook Instagram

Q | Search Mindray Animal Medical

[www.mindrayanimal.com](http://www.mindrayanimal.com)  
[service@mindrayanimal.com](mailto:service@mindrayanimal.com)

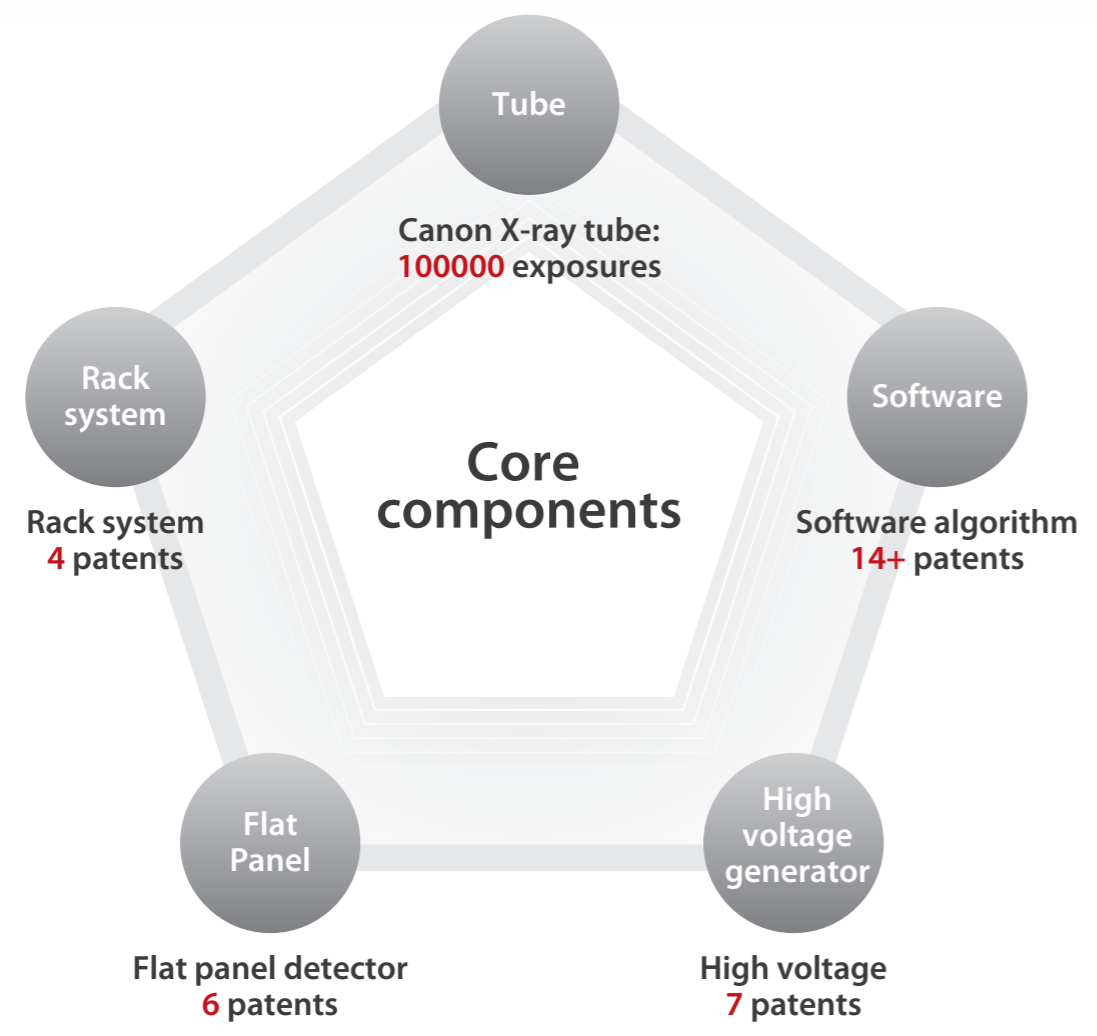
P/N:ENG-VetiX S300-210285X8P-20230609  
©2023 Shenzhen Mindray Animal Medical Technology Co., Ltd. All rights reserved.



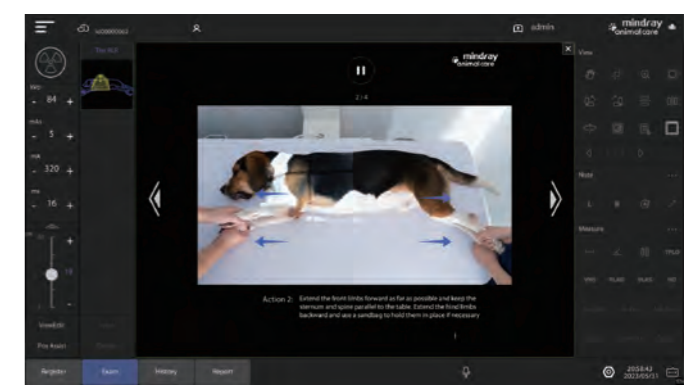
Adhere to Mindray human DR standards  
**Invention patents 30+**



iShotHelper  
 Professional Positioning Guidance



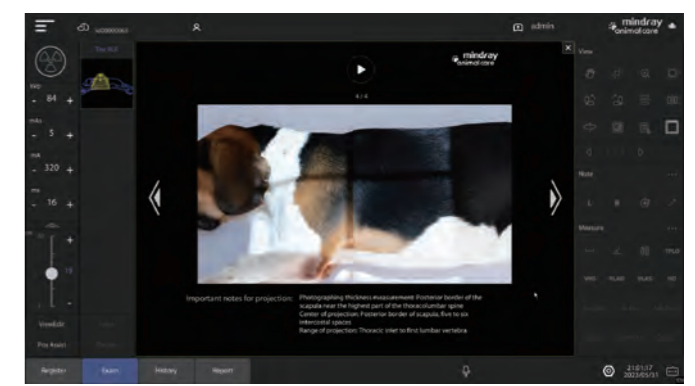
Step1



Step2



Step3



Step4

## iVocal Voice-controlled exposure

Enable efficient capturing and provide comprehensive care for animals.



## iFast One-key Power On/Off

**Fast power on/off**  
Reducing operational errors  
caused by complex start-up  
procedures



## iSolo Single-operator Workflow

iVocal Voice-controlled exposure

Complete the examination process in the same interface

Automatic transition to the next position after exposure



#Touchscreen is Optional

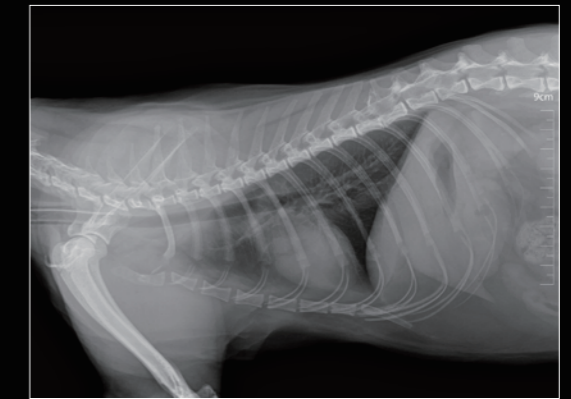
# Specification

X-RAY GENERATOR SPECIFICATIONS	
Constant Potential kW ratings	32 kW
kVp Range	40 - 125 kVp
mAs Range	0.1mAs~125mAs
mA Range	10 mA~500 mA
Maximum inverter frequency	460 kHz
Tube	
Model	E7239X (Canon)
X-Ray tube	Rotating Anode (1.0 / 2.0 mm)
Exposure time	0.001-8 seg
Total Filtration:	≥2.5mmAl (70kV)
Rack	
Table - top type	Floating - 4 way table-top
Table top length	Standard 150 cm, Optional: 120cm
Maximum load patient weight	80 Kg
Brakes	Electromagnetic
Flat panel detector	
Scintillator fluorescent material	CsI
Pixel spacing:	140 μm
Protection class:	IP54
Preview time:	≤2.3 s
Pixel matrix:	3072 × 3072 pixels
Valid data bits	16 bits

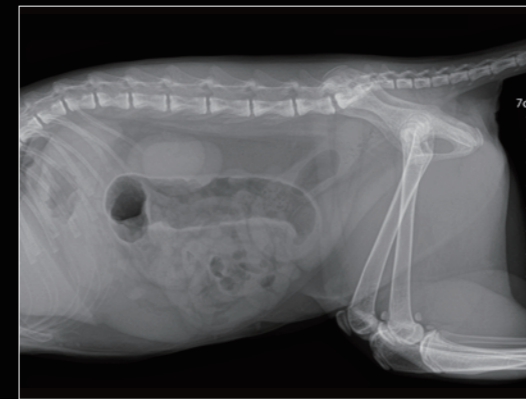
#Optional: Touchscreen



Skull lat



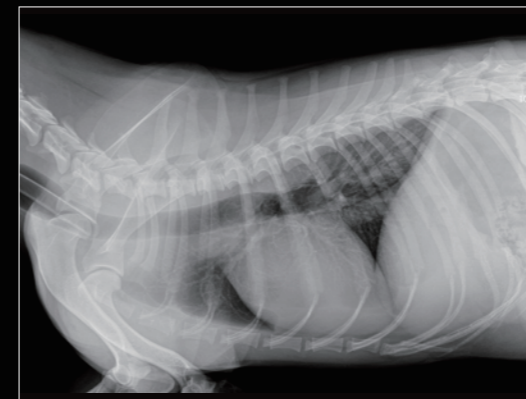
Chest Right Lat



Abdomen Lat



Abdomen Ventrodorsal



Chest Right Lat



Abdomen Left Lat



Astragalus Lat



Limb